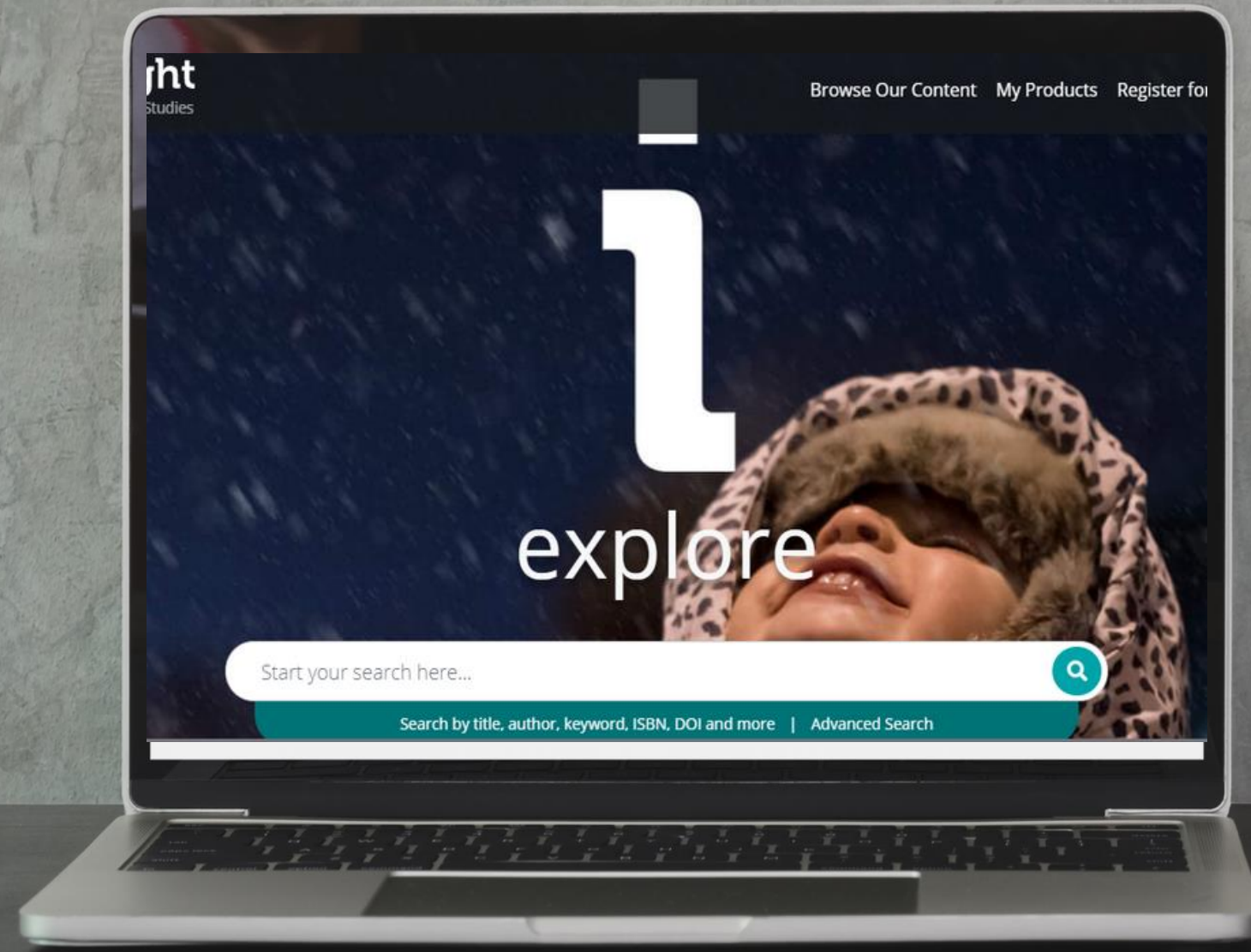




RESOURCES EMERALD INSIGHT



Guide 1

1

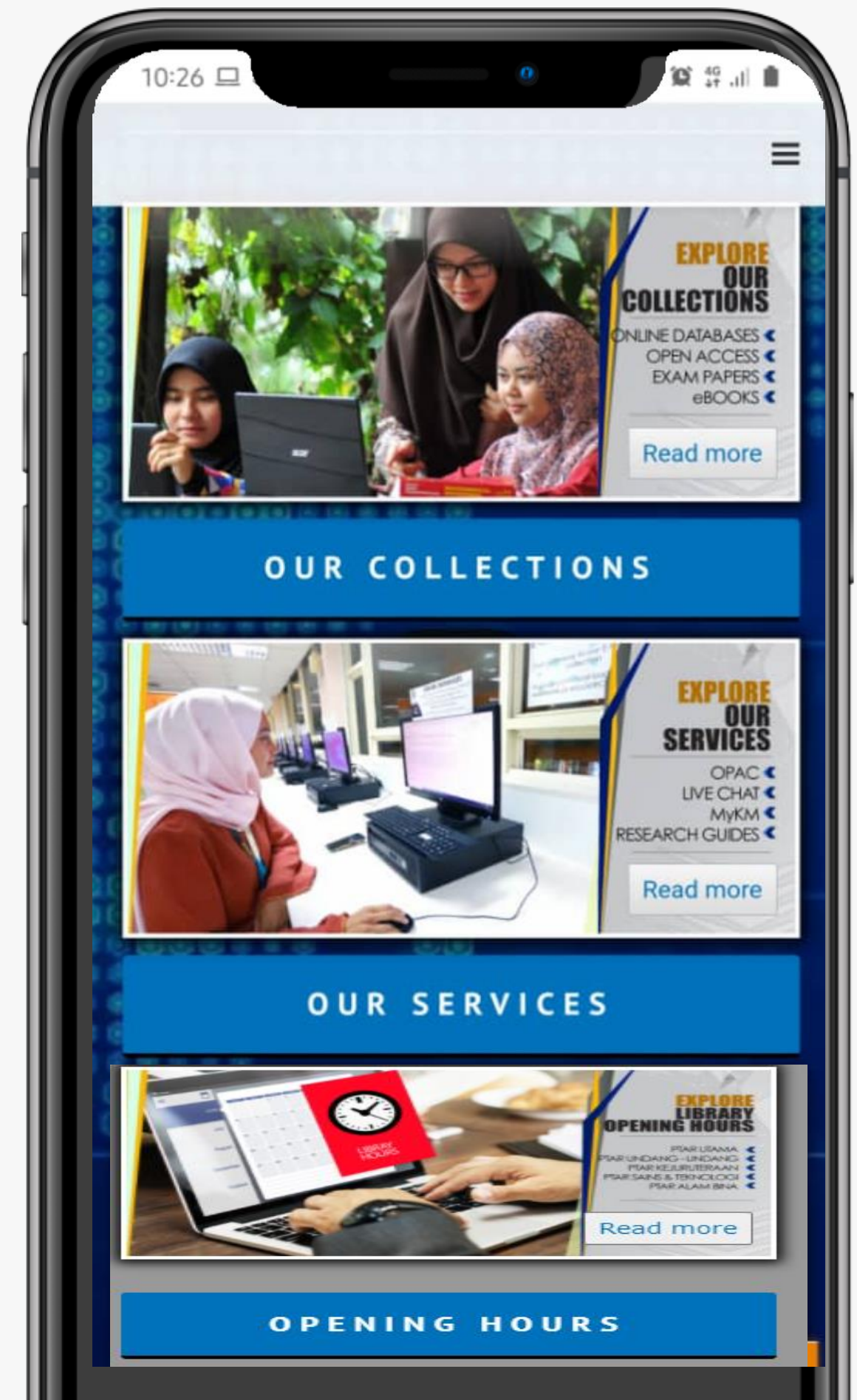
Go to <https://library.uitm.edu.my/>

2

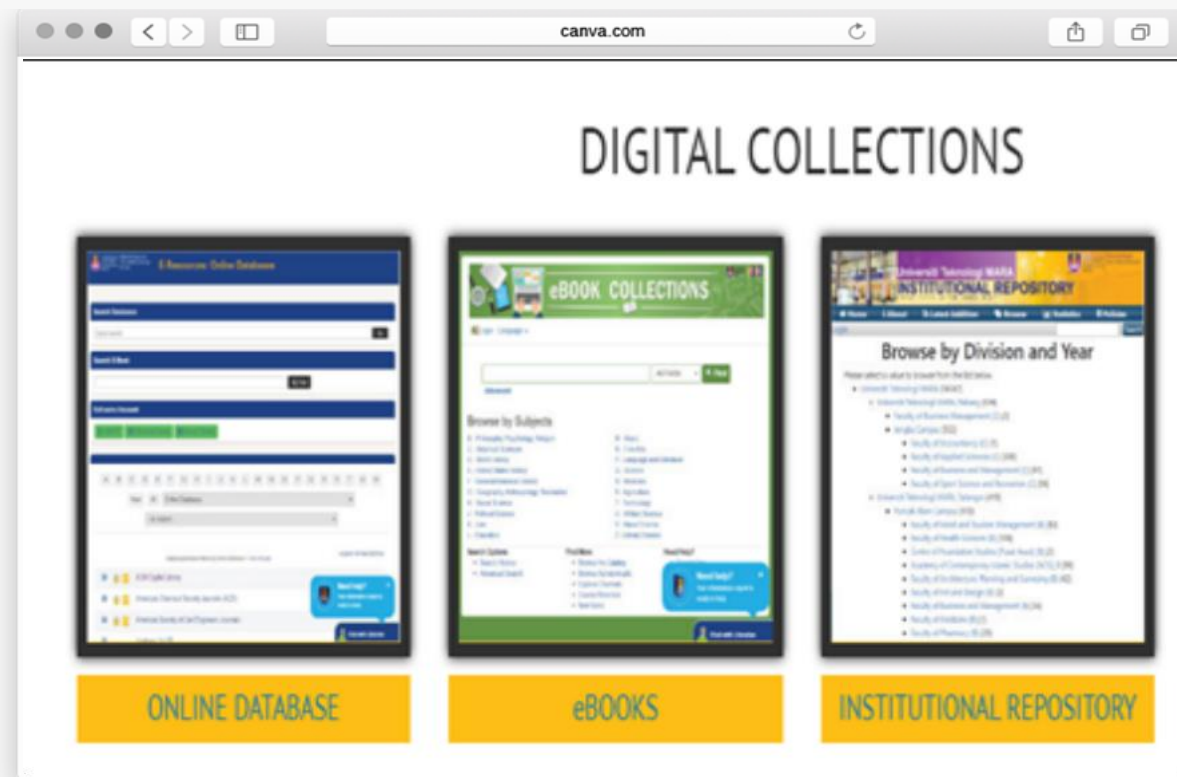
From the library portal website there are three categories namely our collections, our services and opening hours.

3

Click 'Our collections' to access eResources Online Database

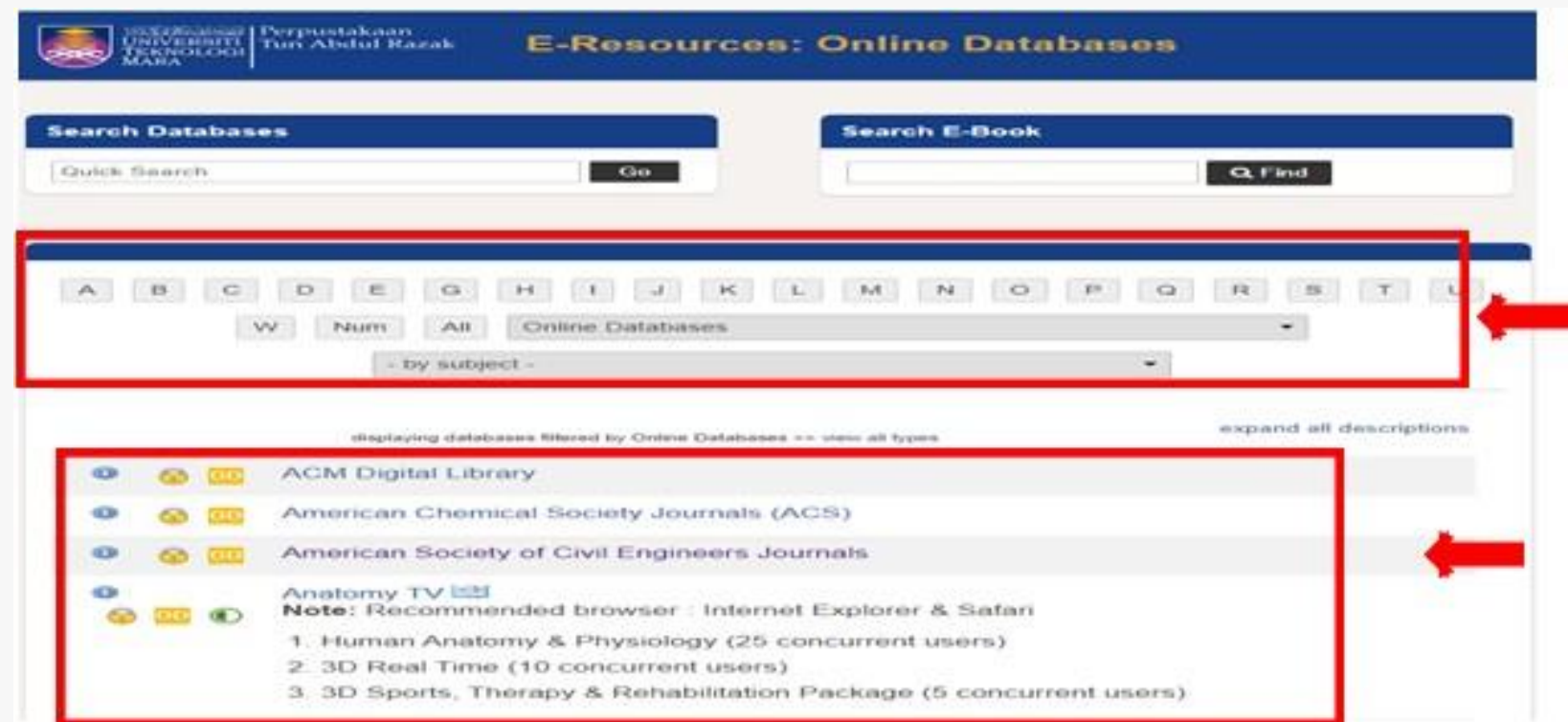


GUIDE 2



1

In the Digital Collections view, Click Online Database to access the Online Database.



2

User can access Emerald Insight either by alphabet or by format or by subject.

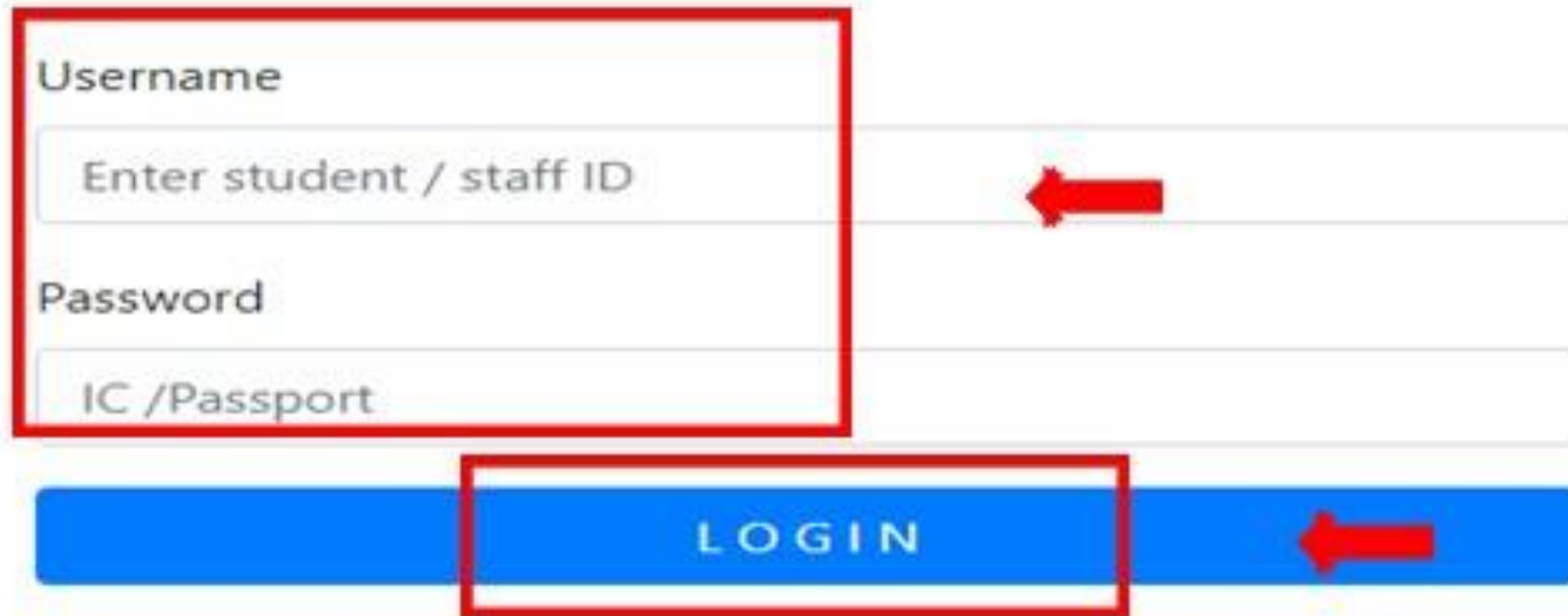
3

Click Emerald Insight.

Username
Enter student / staff ID

Password
IC /Passport

LOGIN



Warning! Unauthorized Access Is Monitored.

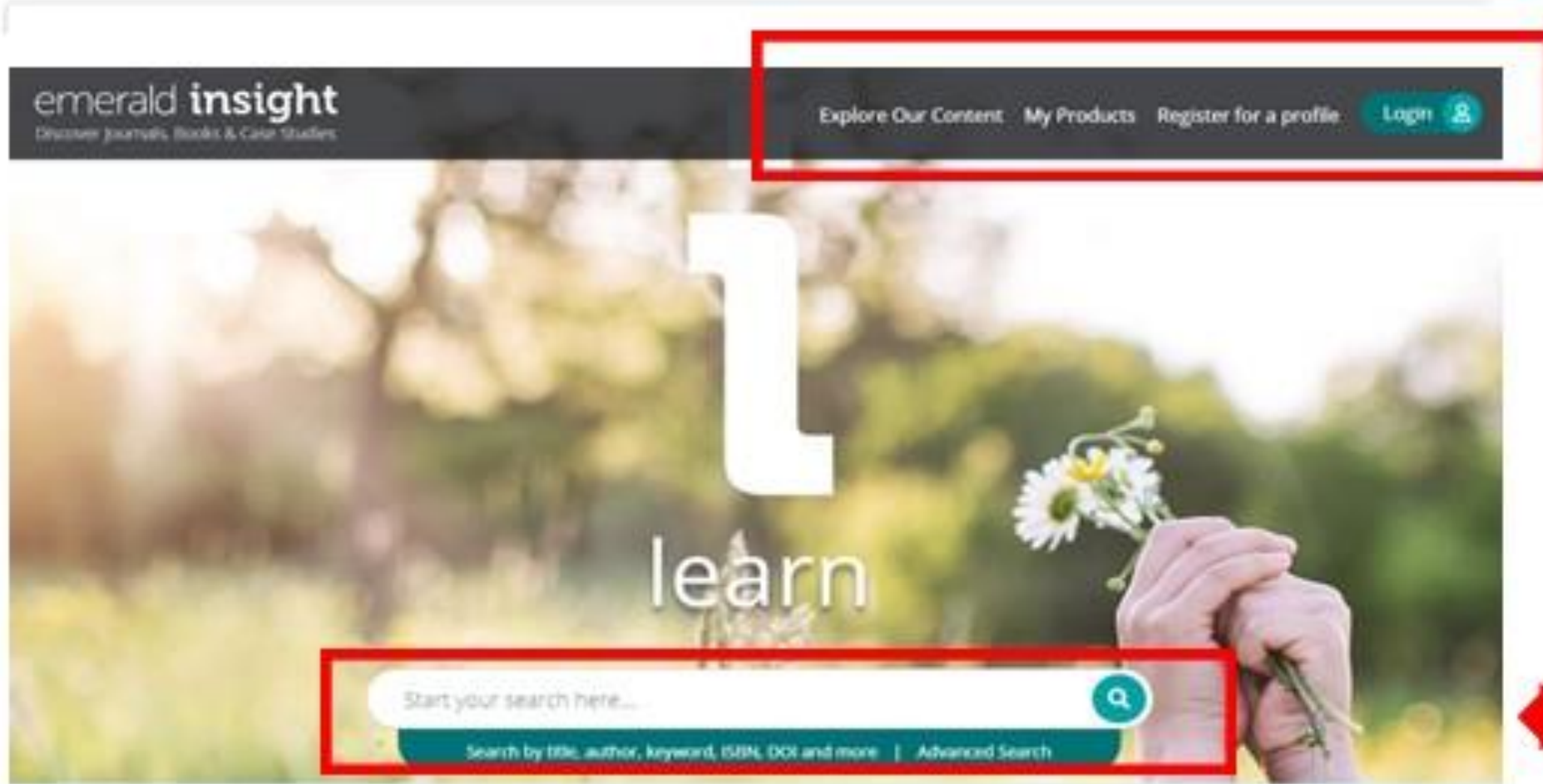
emerald insight
Discover Journals, Books & Case Studies

Explore Our Content My Products Register for a profile Login

learn

Start your search here...

Search by title, author, keyword, ISSN, DOI and more | Advanced Search



Guide 3

- Key in user's id and password.
Username: student no./ staff no.
Password: ic no. / passport no.
- Then, Click login.
- At the upper side of the page, there are Explore our Content, My Products , Register for a profile.
- Key in title/ author, issn/ DOI to access

GUIDE 4

- Click HTML or PDF to get the full record.

The screenshot shows a search results page for 'art and design'. The search bar at the top contains 'art and design' and 'Advanced search'. Below the search bar, the page displays 'Search Results 1 - 10 of over 57000'. The results are sorted by relevance. A red box highlights the 'HTML' and 'PDF (341 KB)' options for the article 'Arts-based research in design education' by Jill Franz. A red arrow points to the 'PDF (341 KB)' option. The article's abstract is visible: 'There is an urgent need in terms of changing world conditions to move beyond the dualist paradigm that has traditionally informed design research, education and practice...'. The 'Access' section on the right includes checkboxes for 'Only content I have access to' and 'Only open access', and a list of filters for time periods: 'Last week (129)', 'Last month (481)', 'Last 3 months (1462)', 'Last 6 months (3040)', 'Last 12 months (6035)', and 'All dates (57335)'. A 'Go' button is at the bottom right of the filters.

GUIDE 6



1 / 14

Arts-based research in design education

Jill Franz
QUEENSLAND UNIVERSITY OF TECHNOLOGY, BRISBANE

ABSTRACT

There is an urgent need in terms of changing world conditions to move beyond the dualist paradigm that has traditionally informed design research, education and practice. Rather than attempt to reduce uncertainty, novelty and complexity as is the conventional approach, an argument is presented in this article that seeks to exploit these qualities through a reconceptualisation of design in creative as well as systematic, rigorous and ethical terms. Arts-based research, which brings together the systematic and rigorous qualities of inquiry with the creative and imaginative qualities of the art, is presented as being central to this reconceptualisation. This is exemplified in the application of art-informed inquiry in a research unit for graduating tertiary-level interior design students. The application is described in this article and is shown to rely substantially on the image and its capacity to open up and reveal new possibilities and meaning.

Keywords: arts-informed research, art-informed inquiry, design education, phenomenology, interior design, landscape

INTRODUCTION

This article describes a research unit where interior design students at a university graduate diploma level use a form of arts-based inquiry in their research. The graduate diploma is a one-year full-time or two-year part-time course incorporating design, research, professional studies, and specialised areas such as conservation and art design. Together with the three-year undergraduate degree, the courses satisfy minimum international requirements for professional practice in interior design/interior architecture. While research is seen as an important component of design courses dealing with the built environment, this has been generally from traditional social science and science viewpoints; the latter reflecting the engineering and material aspects of the built environment, and the former that designers are designing for people and their relationships with each other and the environment. The link with these other disciplines is essentially, however, a substantive one. In terms of the procedural aspect of design, nothing of note has been done to explore the potential of designing as a research methodology or form of inquiry in its own right.

There may be various reasons for this such as tradition and the continuing acceptance of models of research, education and practice that favour dualist, deterministic models of human interaction and knowledge (Franz, 1994) as well as the belief that designing is a creative activity that defies externalisation and the systematisation and rigour required for it to be considered as 'research'. Indeed, interior design like architecture is a hybrid, being neither science nor art but in some way involving both even though there is a tendency to view these aspects as contradictory and incompatible. Generally, they are understood as being relevant at only specific stages in the activity of designing. The belief that the artistry of design can and indeed should be more rigorous and systematic as well as more innovative underpins the unit described in this article.

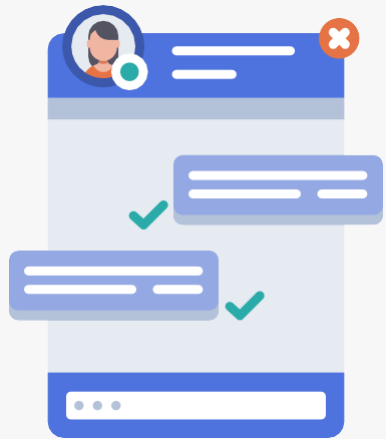
© Copyright 2021 Taylor & Francis Ltd. <https://doi.org/10.1080/00137901.2021.1911111>

Activate Windows
Go to Settings to activate Windows.

- Click download this pdf file to get the full text

CONTACT PERSON

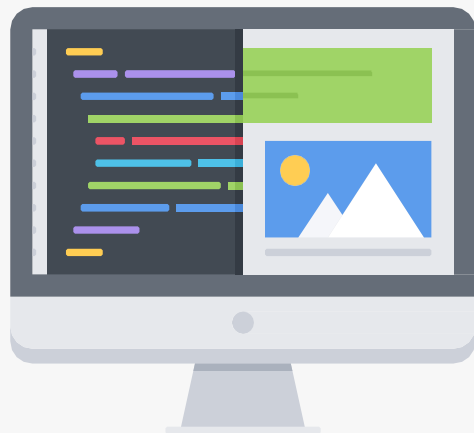
For enquiries on online database searching and access:



Chat with Librarian: <https://ptar.uitm.edu.my/libchat/>

Link to Online Database:

<http://qr.library.uitm.edu.my/onlinedb>



Link to Emerald Insight Searching Guide:

https://www.emeraldgrouppublishing.com/sites/default/files/2020-01/search_en.pdf

Link to video User Guide:

<https://www.youtube.com/watch?v=7AefUgQt-qc>